



TIIG

INJURY SURVEILLANCE IN THE NORTH WEST OF ENGLAND

MANCHESTER ROYAL INFIRMARY EMERGENCY DEPARTMENT

MONTHLY BULLETIN: OCTOBER 2013 TO SEPTEMBER 2014

This bulletin provides a breakdown of all injury attendances to Manchester Royal Infirmary Emergency Department (ED) between October 2013 and September 2014.

During this twelve month period there were 16,956 injury attendances to the ED. The month with the highest number of attendances, calculated as a daily average, was October 2013 (59 per day) with August 2014 having the lowest attendances (36 per day; **Figure 1**).

Males accounted for six in ten (60%) injury attendances (**Figure 1**). The highest proportion of attendances were for persons aged between 20 and 34 years (41%) followed by those aged between five and 19 years (20%; **Figure 2**).

The majority (65%) of attendances were recorded as other accident. Road traffic collisions (RTCs) accounted for 13% of all injury attendances, 11% were sports injuries, 10% were assaults and 2% were sustained by deliberate self-harm (DSH; **Table 1**). Over four in ten (44%) RTC attendees were aged between 20 and 34 years and over six in ten (62%) sports injury attendees were aged between 20 and 34 years (**Figure 3**).

Table 2 shows the arrival method of attendances to Manchester Royal Infirmary ED. Almost eight in ten (79%) arrived by means other than an ambulance, while approximately one in five (21%) arrived by ambulance.

The disposal of a patient can give an indication of the severity of the injuries sustained. Forty-six per cent of attendees were discharged with no follow-up treatment required, almost a third (32%) were referred for further treatment and 13% were admitted to hospital (**Table 3**). Almost six in ten (57%) RTC attendees were discharged while 11% were admitted to hospital, and over a third (35%) of DSH attendees were admitted to hospital (**Table 4**).

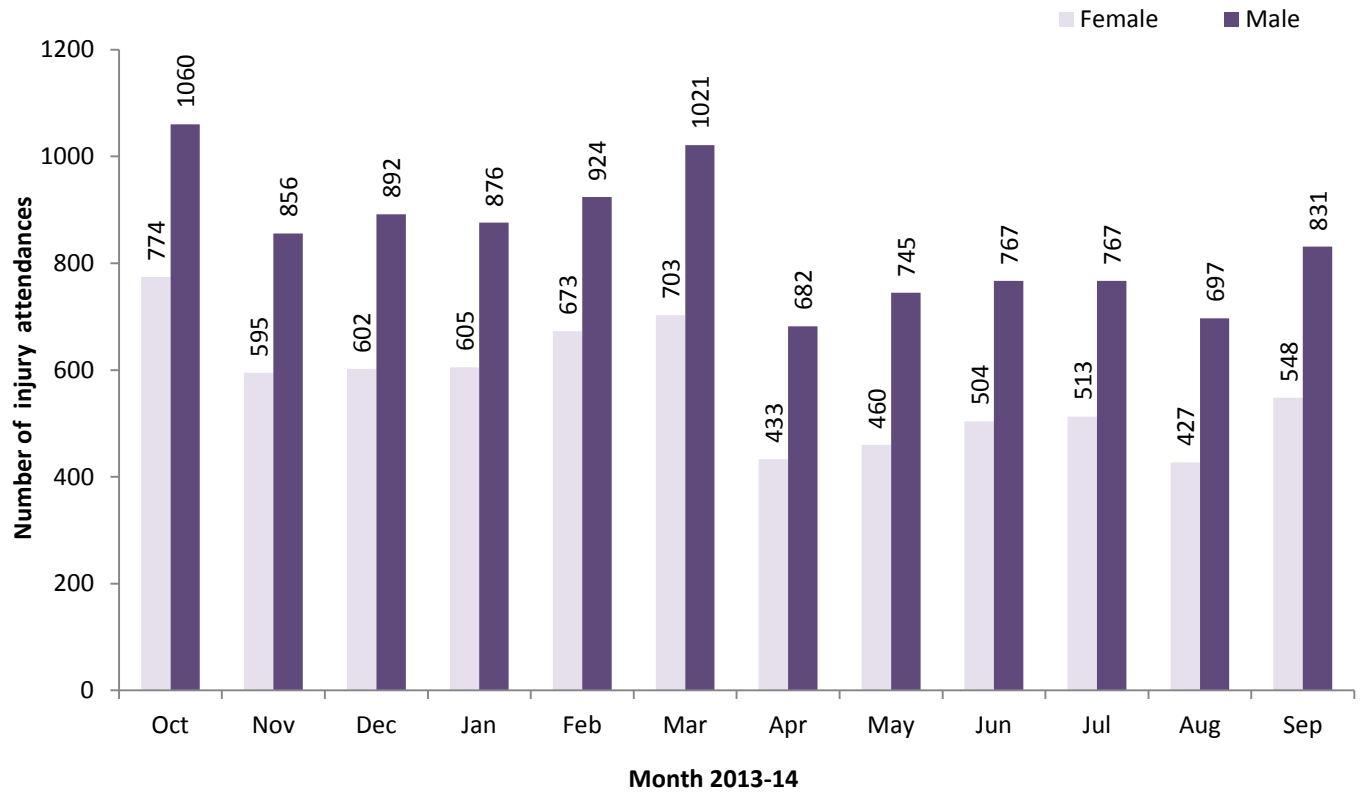
Table 5 shows the ethnicity of attendees to Manchester Royal Infirmary ED. Six in ten (60%) were White, 8% were Pakistani and 7% were Black.

Assault attendances

Between October 2013 and September 2014 there were 1,636 assault-related injury attendances to Manchester Royal Infirmary ED.

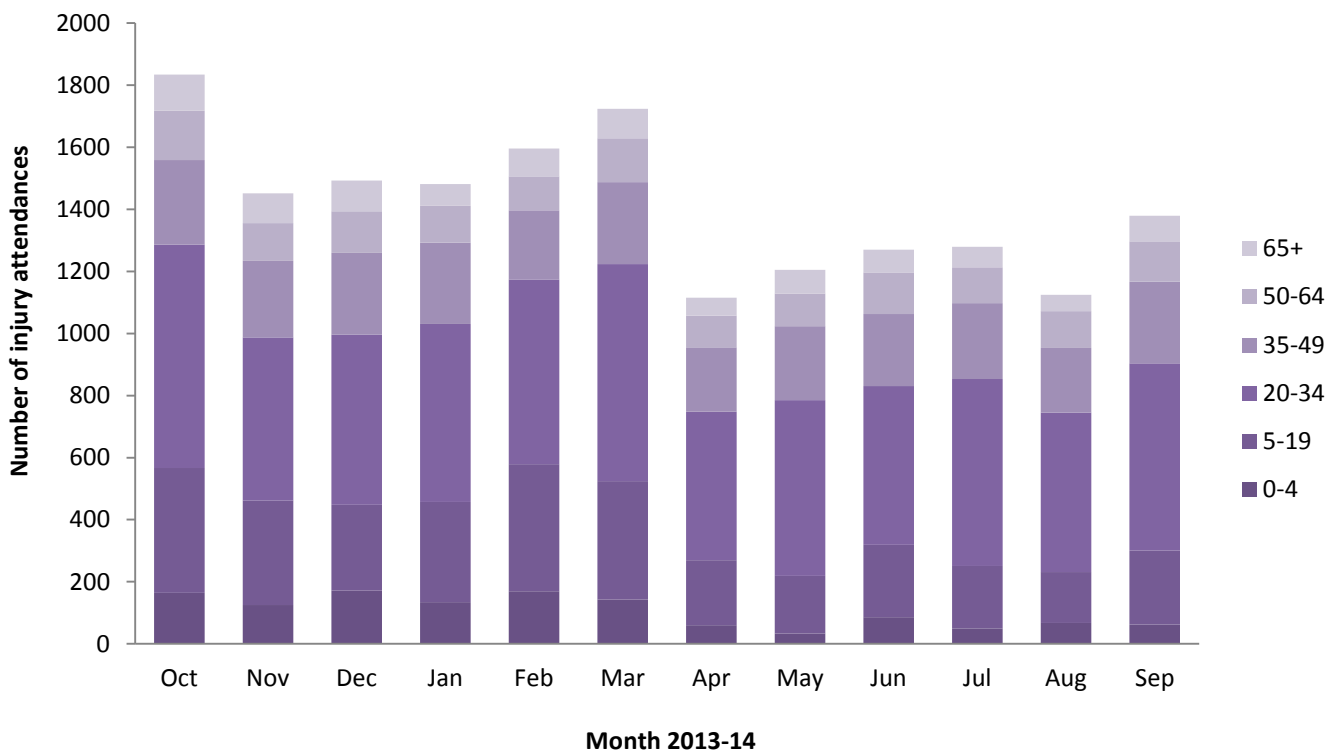
Almost three-quarters (73%) of assault attendances were male and 55% were aged between 20 and 34 years (**Table 6**).

Figure 1: ED injury attendances by gender and month, October 2013 to September 2014[^]



[^] There were <5 records where the gender was unknown; these have been omitted from the chart.

Figure 2: ED injury attendances by age group and month, October 2013 to September 2014[§]



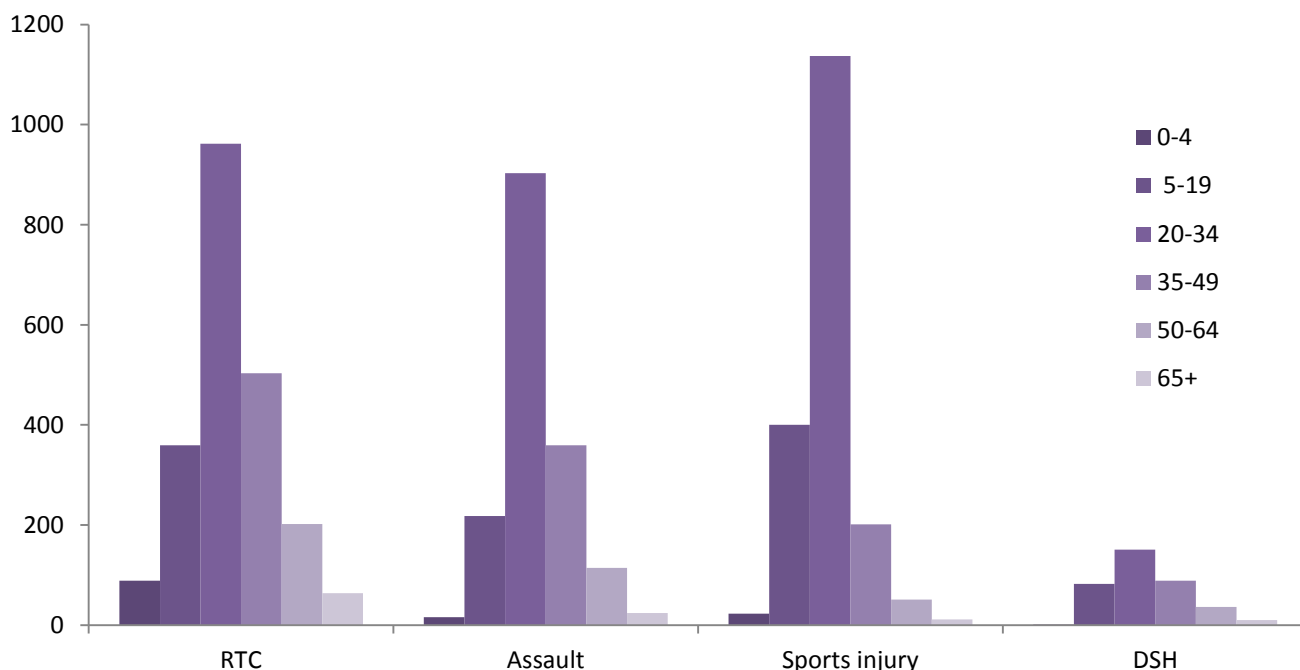
[§] There were <5 records where the age was unknown; these have been omitted from the chart.

Table 1: ED injury attendances by injury group and month, October 2013 to September 2014[†]

Injury group	Oct	Nov	Dec	Jan	Feb	Mar	Apr	May	Jun	Jul	Aug	Sep	Total	%
Other accident	1287	999	1015	988	1117	1188	649	721	786	745	670	782	10947	65
RTC	194	200	196	203	145	166	159	162	213	203	153	186	2180	13
Sports injury	169	116	110	105	149	186	154	180	121	163	127	243	1823	11
Assault	146	124	149	145	143	155	115	114	129	142	152	122	1636	10
DSH	38	12	24	40	43	29	38	28	22	27	23	46	370	2
Total	1834	1451	1494	1481	1597	1724	1115	1205	1271	1280	1125	1379	16956	100

[†] Due to low numbers, firework injuries have been included in the 'other' accident category (n=<5).

Figure 3: ED injury attendances by age group and injury group (excluding other accident), October 2013 to September 2014*



* There were <5 RTC and <5 Assault records where the age was unknown; these have been omitted from the chart.

Table 2: ED injury attendances by arrival mode and month, October 2013 to September 2014

Arrival mode	Oct	Nov	Dec	Jan	Feb	Mar	Apr	May	Jun	Jul	Aug	Sep	Total	%
Other	1452	1153	1173	1157	1258	1352	842	933	996	1041	868	1101	13326	79
Ambulance	382	298	321	324	339	372	273	272	275	239	257	278	3630	21
Total	1834	1451	1494	1481	1597	1724	1115	1205	1271	1280	1125	1379	16956	100

Table 3: ED injury attendances by disposal method and month, October 2013 to September 2014

Disposal method	Oct	Nov	Dec	Jan	Feb	Mar	Apr	May	Jun	Jul	Aug	Sep	Total	%
Discharged	832	653	695	720	766	841	476	530	602	569	504	570	7758	46
Referral/follow-up	583	460	442	431	473	525	355	400	415	448	343	468	5343	32
Admitted	206	172	195	190	194	237	155	140	152	147	160	187	2135	13
Other	213	166	162	140	164	121	129	135	102	116	118	154	1720	10
Total	1834	1451	1494	1481	1597	1724	1115	1205	1271	1280	1125	1379	16956	100

Table 4: ED injury attendances by disposal method and injury group (excluding other accident and firework injury), October 2013 to September 2014

Disposal method	RTC		Assault		DSH		Sports injury		Total	
	n	%	n	%	n	%	n	%	n	%
Discharged	1237	57	628	38	83	22	808	44	2756	46
Referral/follow-up	574	26	465	28	114	31	876	48	2029	34
Admitted	230	11	297	18	129	35	62	3	718	12
Other	139	6	246	15	44	12	77	4	506	8
Total	2180	100	1636	100	370	100	1823	100	6009	100

Table 5: ED injury attendances by ethnicity and month, October 2013 to September 2014¹

Ethnicity	Oct	Nov	Dec	Jan	Feb	Mar	Apr	May	Jun	Jul	Aug	Sep	Total	%
White	1139	838	901	882	937	1046	680	732	765	808	622	832	10182	60
Other ethnic group	206	187	155	193	197	189	119	127	136	115	121	122	1867	11
Pakistani	119	122	133	129	135	124	83	91	108	86	112	104	1346	8
Black	124	109	107	80	115	113	59	94	94	96	91	117	1199	7
Not stated	61	58	49	59	64	81	60	44	43	58	70	86	733	4
Mixed	60	32	54	43	53	46	36	37	39	37	29	39	505	3
Asian other	55	42	38	32	38	44	39	37	44	39	30	28	466	3
Indian	31	21	25	33	23	36	19	21	19	21	19	23	291	2
Chinese	21	26	20	19	23	23	12	13	11	10	16	16	210	1
Bangladeshi	18	16	12	11	12	22	8	9	12	10	15	12	157	1
Total	1834	1451	1494	1481	1597	1724	1115	1205	1271	1280	1125	1379	16956	100

ASSAULTS

Table 6: ED assault attendances by gender and age group, October 2013 to September 2014[§]

Gender	Assault attendances (n=1,636)		All injury attendances (n=16,956)
	n	%	%
Male	1188	73	60
Female	448	27	40
Age group	n	%	%
0 - 4	<20	1	7
5 - 19	218	13	20
20 - 34	903	55	41
35 - 49	359	22	17
50 - 64	114	7	9
65 plus	24	1	6

[§] There were <5 records where the age was unknown; these have been omitted from the table.

¹ White = Irish, British, other White background; Mixed = White and Black, White and Asian, mixed - any other; Black = African, Caribbean, other Black.